

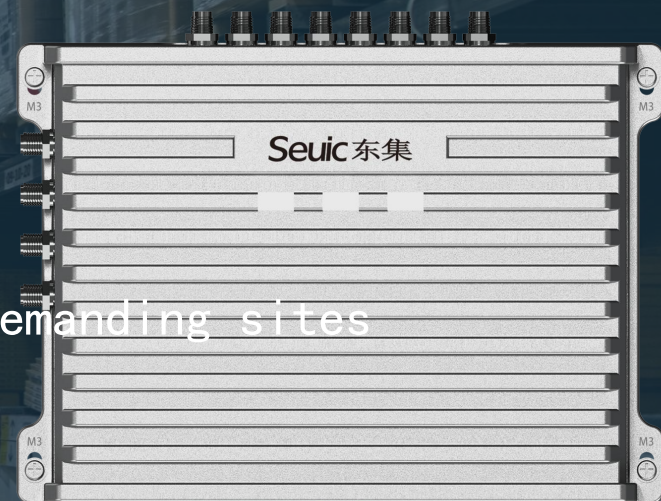
Seuic东集

AUTOID[®] UF3-S

Long-term stability, enhancing the efficiency of large-volume and demanding sites



Android-based Smart UHF RFID reader with eight channels



AUTOID®UF3-S First Impression



AUTOID®UF3-S Android-based Smart UHF RFID reader with eight channels

AutoID®UF3-S readers are UHF eight-channel readers based on Impinj R2000 reading and writing engines developed independently by SEUIC. The unit can support RJ45, RS232, Wi-Fi, Bluetooth, 4G, and other communication methods with its Android operating system. Due to its small size and PoE capabilities, it is easily deployed and can be used widely in asset management, smart manufacturing, and innovative retail stores for greater efficiency.



Applications

Intelligent cabinet

Book Archives,
Manufacturing, Public
utilities



Entrance

Retail, Library Archive,
Assets Management



Intelligent archives/Shelves

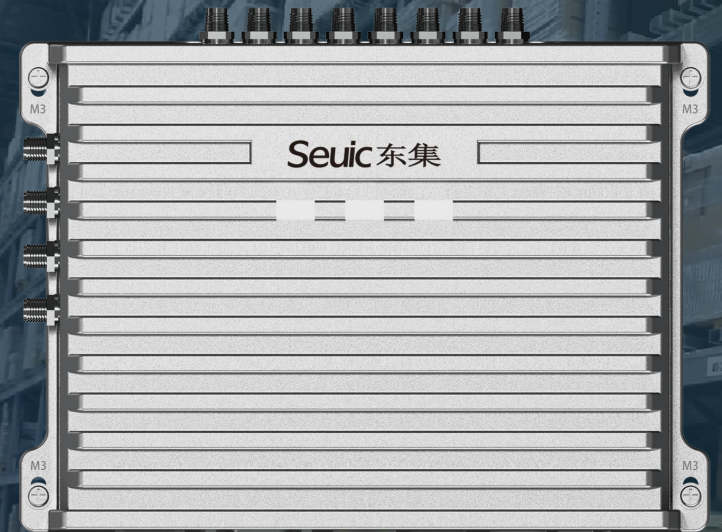
Warehousing, Archives,
Manufacturing



PART-01

Practical and easy-to-use, improving productivity

High performance · Fast polling · User-friendly interface · Android 10.0 · Output video



RFID technology with excellent and stable performance

- Support ISO18000-6C protocol, has an output power ranging from 0 to 33dBm and can recognize up to 700 sheets per second.
- There are two modes of anti-collision that support EPC and TID
- High-performance multi-channel RFID equipment for large-capacity and severe environments



> 700 Sheets/Sec.



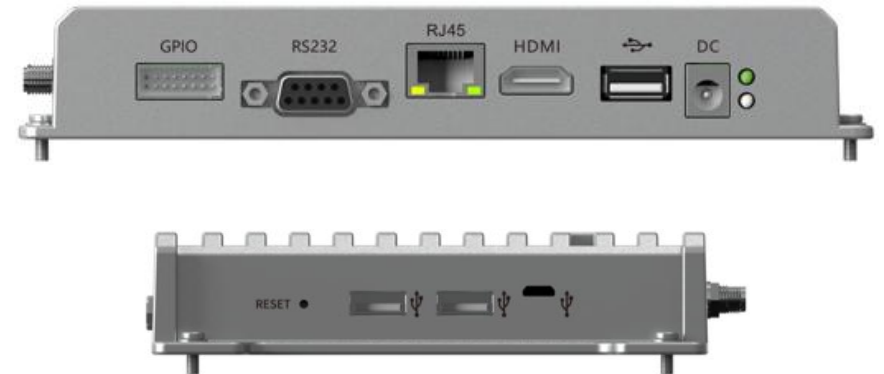
Polling with eight antennas at high speed for wide coverage

- Support automatic antenna detection, wider coverage and higher recognition abilities with 8 external SMA antenna ports



It offers a wide range of communication functions and is easy to use

-
- RS232, RJ45 network ports communication, USB2.0, and other interfaces are supported to meet customers' various needs, including Bluetooth 4.0, 2.4/5G dual-band Wi-Fi, and other data connections.



An advanced operating system for Android 10.0

- Android 10.0 operating system, built-in 2GB + 16GB storage, smooth data processing, and easy operation.



This interface is intuitive, clear, and visually appealing.



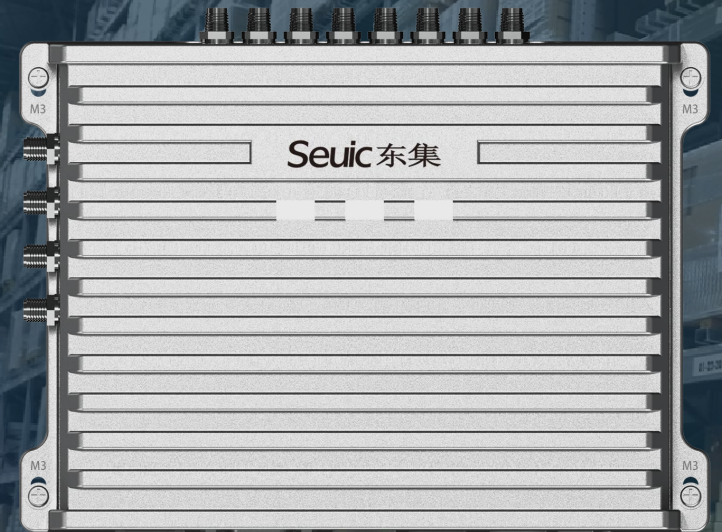
-
- HDMI D TYPE supports the fastest transmission speeds of up to 5GB/s, quickly enabling 1080P high-definition video output. In addition, Android provides a clear, visible interface that makes operation convenient.



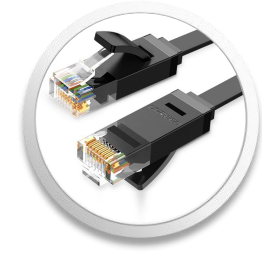
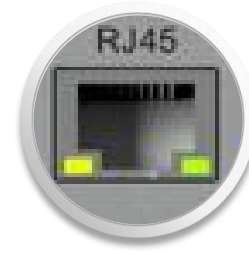
PART-02

On-site stability is ensured with a wide range of functions

Small size/PoE • Bluetooth control • IPV4/IPV6



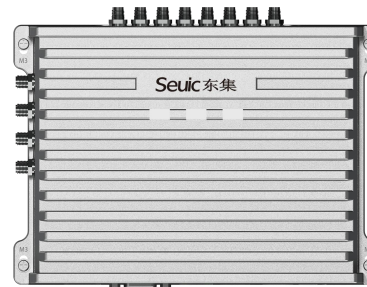
Power supply with PoE support, easy to install



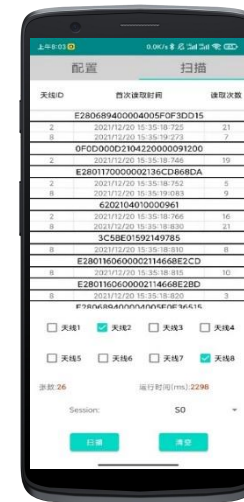
-
- Its low-power design supports conventional DC12V and PoE power supplies, with a small body that fits easily, eliminating the trouble of power wiring, saving space, and making deployment quick and convenient.



Easy configuration and fast connection with Bluetooth

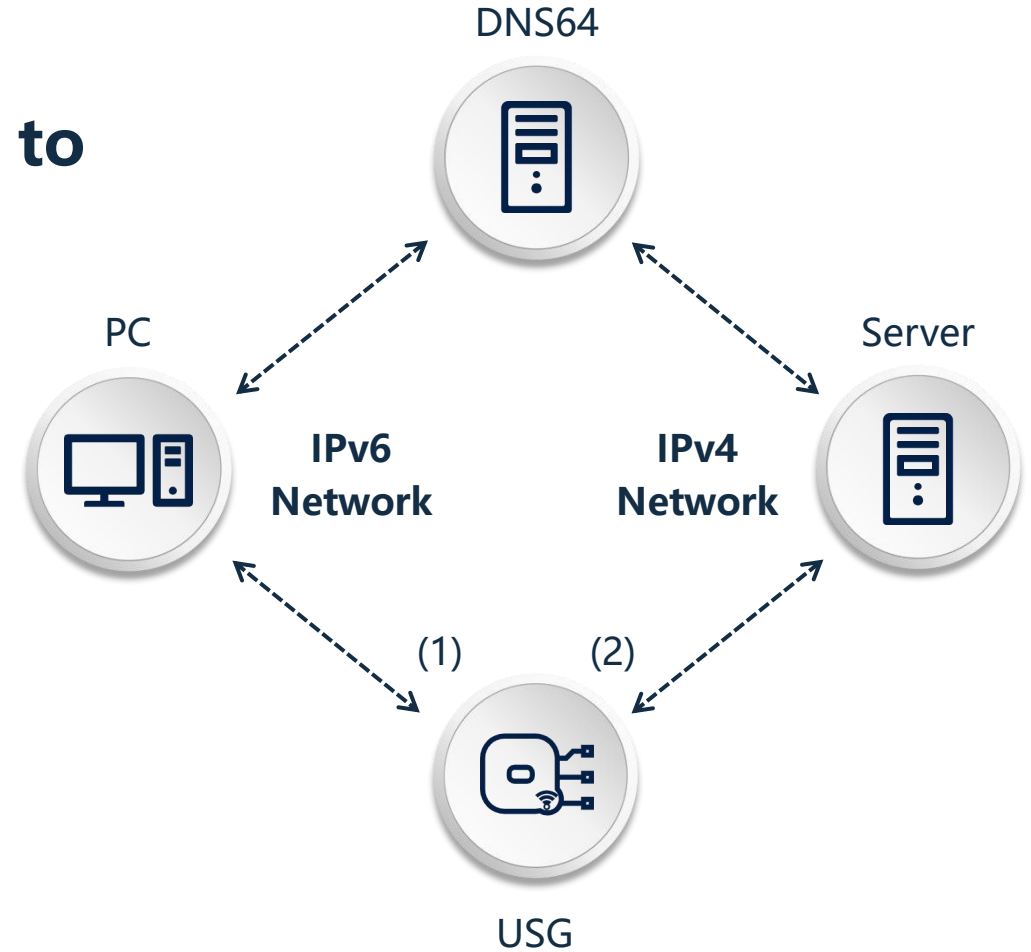


- A specially equipped Bluetooth configuration tool APP supports Bluetooth connection, convenient configuration, and can be controlled quickly and intuitively.



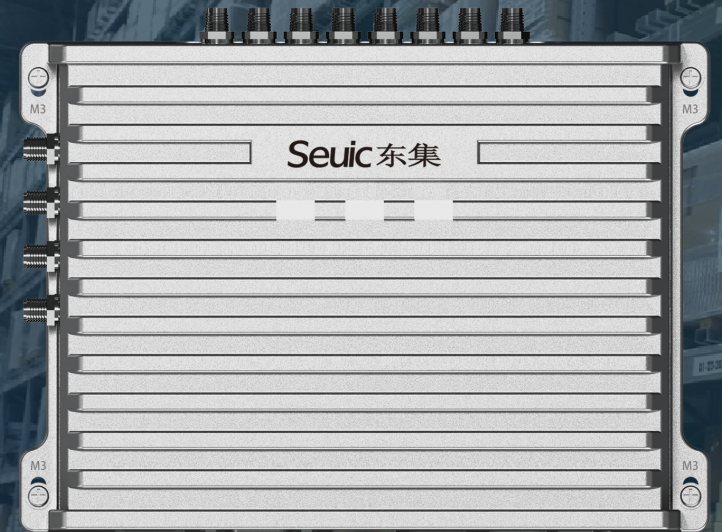
Devices can be deployed in any number to meet a customer's needs

-
- Supports IPV6 as well as IPV4 networks, avoiding the inconvenience caused by a limit of 254 devices on the same network segment within IPV4.



PART-03

Order and Accessories



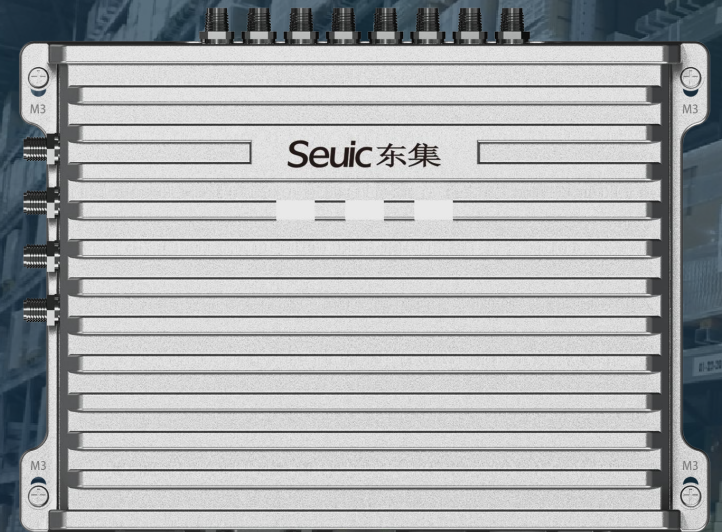
Choosing the right product model for your application

Standard/Optional	Parameters/Functions	Function code	Configuration description
Standard	UHF	U8	R2000 module
	OS	S-A	Android system
	Memory	2/16	RAM 2G ROM 16G
	Label Protocol	/	EPC C1 GEN2 / ISO 18000-6C
	Frequency	/	840Mhz - 960Mhz (variable according to country or region)
	Reading speed	/	700 Sheets/ sec
	Power output	/	0-33dBm adjustable, +/-1.0dBm
Optional	Antenna port	A18	External antenna port SMA*8
	Communication port	C	RS232+RJ45+USB+4G+WIFI
	Status indicator	/	Power indicator, status light, buzzer
	Power supply	/	9~12V DC
	IP level	/	IP54
Optional	POE powered	POE	Support POE power supply
	Temperature	-40~70	-40~70℃

Order example:
The communication port is RS232+RJ45+USB+4G+WIFI, 8 external antenna interfaces, it should be written: AUTOID UF3-S-A-2/16-U8A18C-POE

PART-04

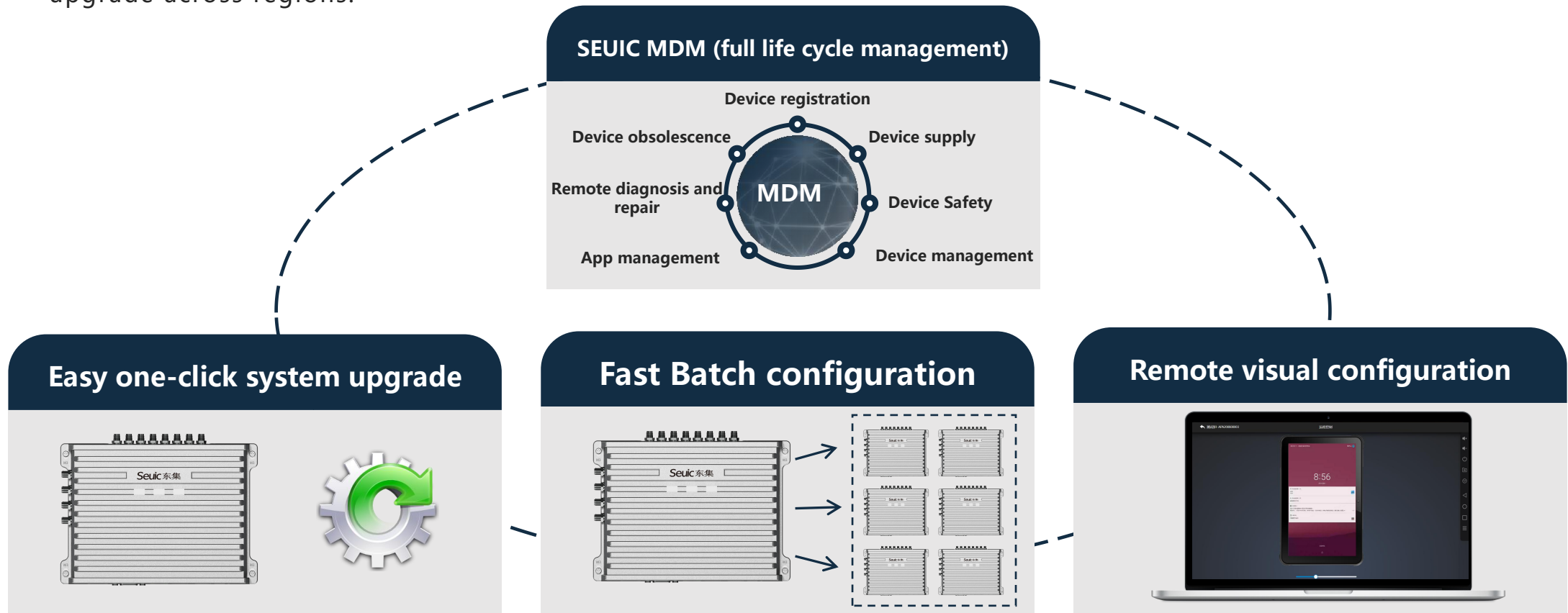
Management can be more productive and worry-free
with the equipment management platform



A thoughtful software design simplifies management

Support MDM (Mobile Device Management Platform)

- Real-time monitoring of equipment status and centralized management of equipment via remote visual configuration
- Supports batch setting and distribution of the same scenario and system upgrade, allowing for rapid deployment and upgrade across regions.





Seuic

**Smart Tools, More Durable,
More Efficient**



SEUIC Technologies Co., Ltd.

-  : Autoid Seuic
-  : en.seuic.com
-  : Marketing@seuic.com
-  : NO.15 Xinghuo Road, High-tech development zone, Nanjing