

# Seuic HS220

Industry Wireless Scanner



# Application scenario

Significantly improve the constraints caused by data transmission cords.

## Electronics and manufacturing industry

1. Complete machine and parts manufacturing
2. Parts traceability for consumer electronics' repairing and service store
3. Pass station scanning capture for manufacturing production line
4. Bar code capture for home appliance manufacturing
5. Auto parts assembly



# Seuic HS220

## Product description



Seuic HS220 is a high-performance wireless Bluetooth scanner designed for the electronics manufacturing industry. Compared with general-purpose scanners, HS220 can provides better performance for micro-sized high-density barcodes, laser-engraved barcodes or inkjet bar codes on the surface of printed circuit boards, 2D codes engraved on metal parts, and barcodes with poor printing quality regarding decoding performance and user experience.

Seuic HS220 is equipped with a wireless communication module based on Bluetooth 5.0, which supports barcode data transmission within a range of 100m in an open area, allowing users to capture barcodes and scan them immediately without restriction!



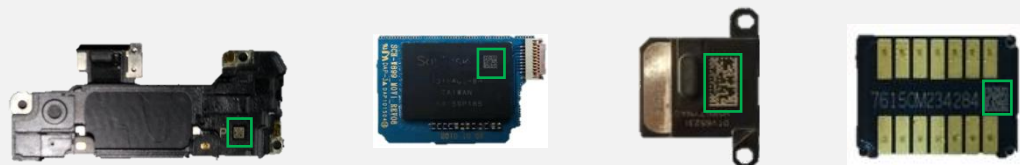
# Appearance and grip feature



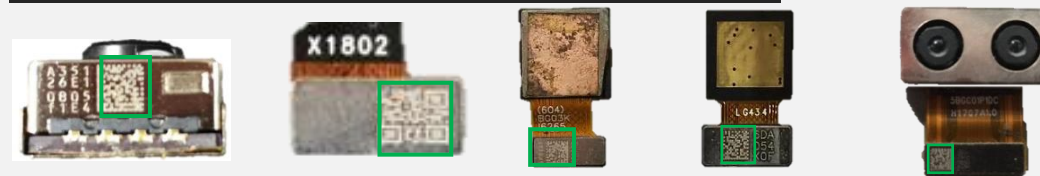
Versatile use with high quality

# Strong decoding capability, one done

Tiny 2D code laser engraved on the surface of PCB



2D codes laser carved on the tiny metal piece



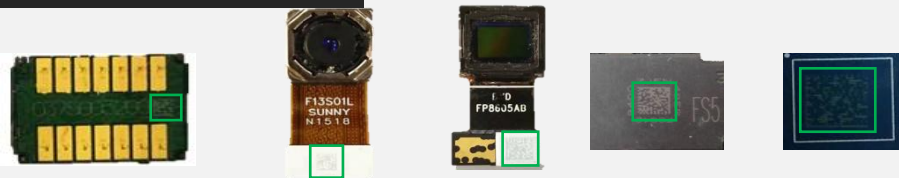
Small barcode printed on label



4 inch long barcode



Barcodes with low-contrast



# Wireless Bluetooth, 100 meters transmission

With industry-leading Bluetooth 5.0, class 1 wireless communication protocol, data transmission speed is 2 times faster than the previous generation of Bluetooth, data transmission distance in open area can up to 100 meters.

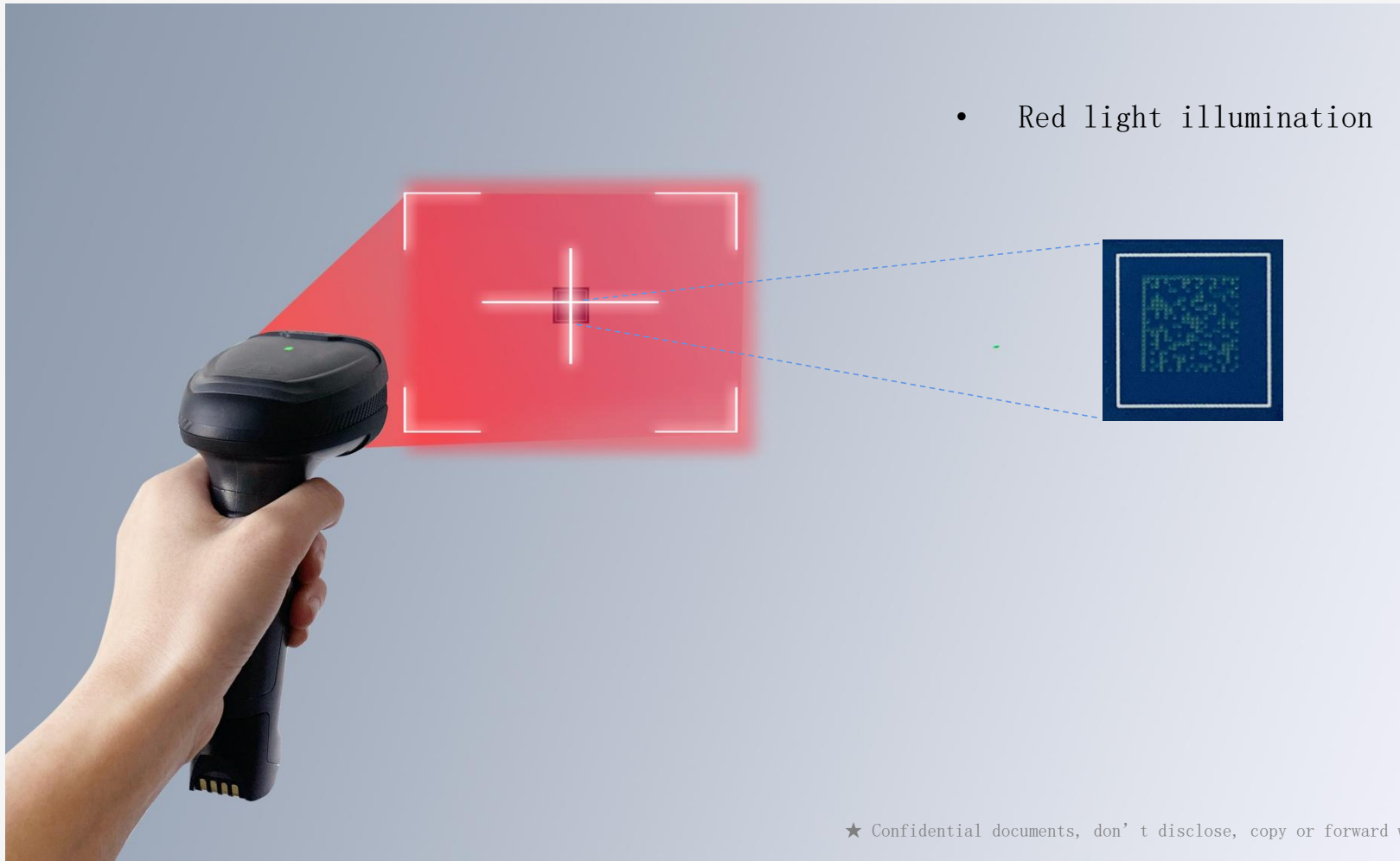


100m



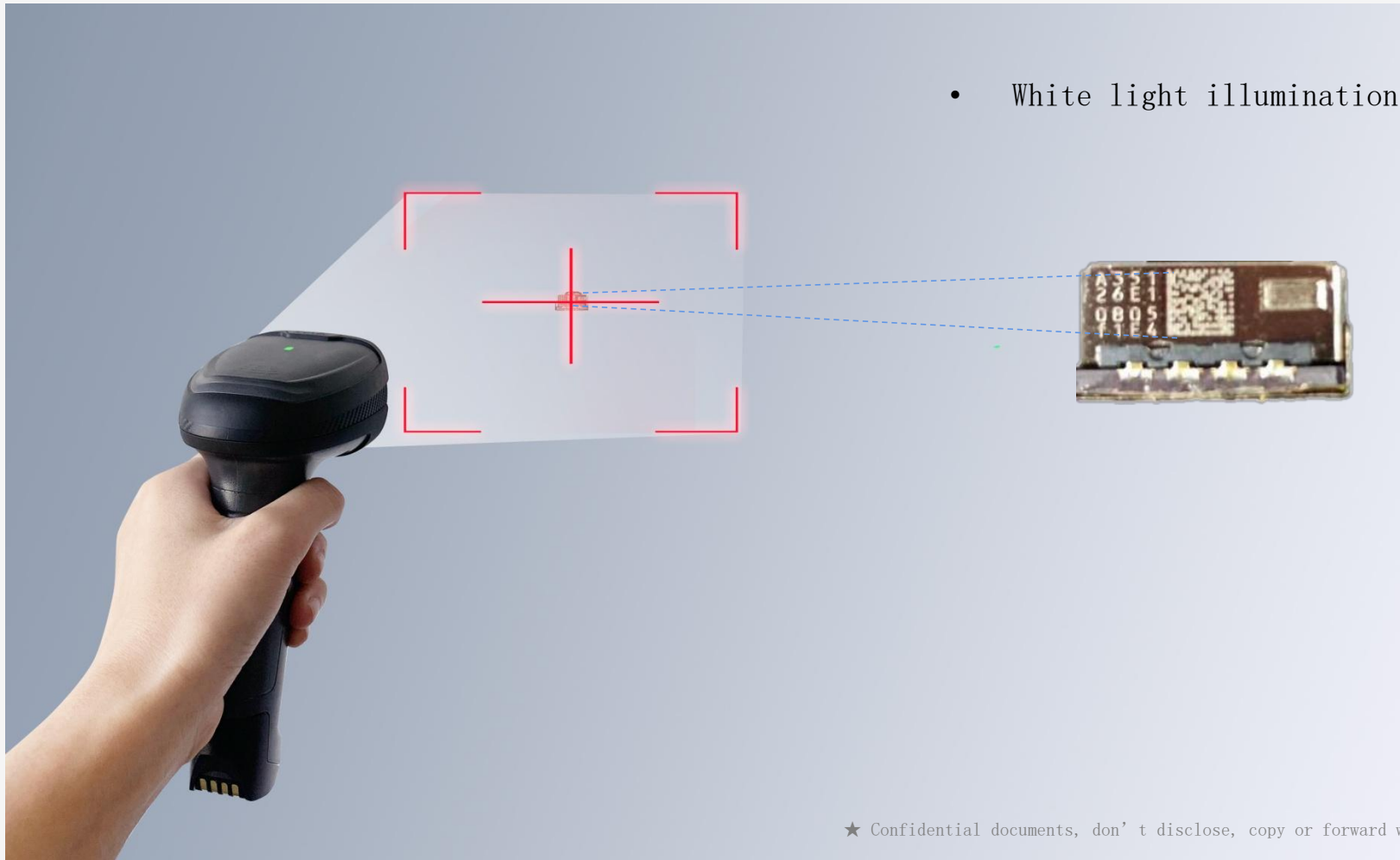
# Intelligent illumination, automatic adjustment

The intelligent adjustable twin-color illumination group can automatically adjust the light source type according to the decoding effect and meanwhile adapt to the engraved barcode with different background colors.



# Intelligent illumination, automatic adjustment

The intelligent adjustable twin-color illumination group can automatically adjust the light source type according to the decoding effect and meanwhile adapt to the engraved barcode with different background colors.





# Peerless human-computer interaction, friendly hints

- It provides three-direction reading status prompt lamp and battery capacity indicator at the top cover, the working status of the equipment is clear at a glance.



Green:  
More than 50%, high  
capacity



Yellow:  
21-50%, medium  
capacity



Red:  
Less than 20%, low  
capacity



Green light flashed  
Decoding succeeded



Red light flashed  
Decoding failed



Yellow light flashed  
Communication anomaly

# General view

Three-direction Status  
Light

Battery capacity  
Indicator

Pairing button

3500mAh High Capacity Removable Battery  
100,000 times Scanning on a Full Charge

Switch Knob for Desktop/Wall hanging

One-to-many BT Communication Base



# Packing list

1. Charging cradle with communication

2. HS220 Main device

3. USB Data cable

4. Power adapter

5. Li-ion battery

6. Quick start Guide

7. Package box





**Smart Tools, More Durable,  
More Efficient**

---



## **SEUIC Technologies Co., Ltd.**

- ☎ : Autoid Seuic
- 🌐 : [en.seuic.com](http://en.seuic.com)
- ✉ : [Marketing@seuic.com](mailto:Marketing@seuic.com)
- 📍 : NO.15 Xinghuo Road, High-tech development zone, Nanjing